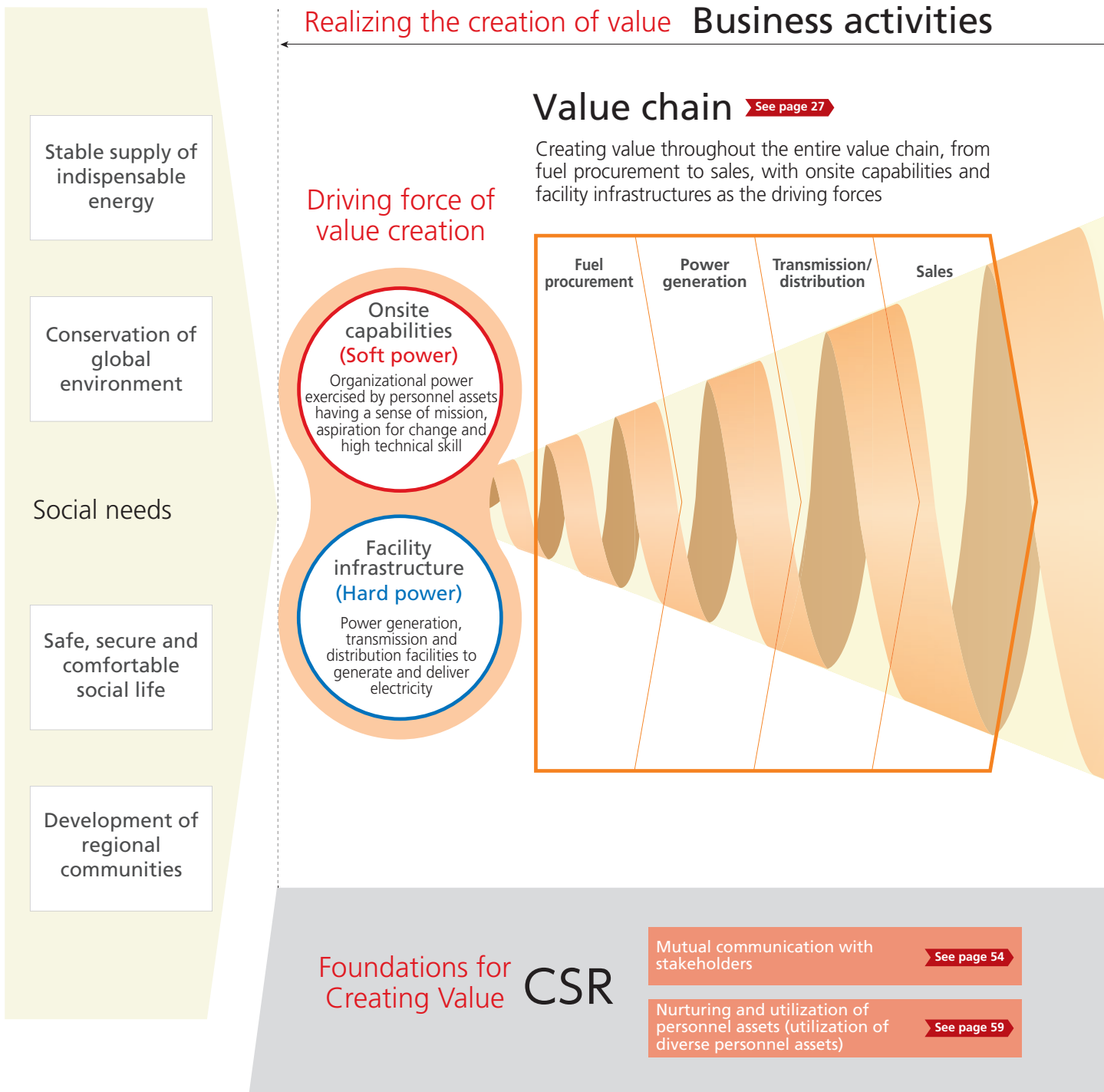


Value Creation Process

Using our onsite capabilities, which have been developed since the founding of the company, and facility infrastructures as driving forces, we are creating value that meets the needs of society, while also aiming to become a "total energy service corporate group that is one step ahead" through our value chain comprising from fuel procurement to sales.

Furthermore, we will deliver the value to all of our stakeholders, and preserve their trust and meet their expectations, thereby fulfilling our corporate philosophy. With CSR positioned as a foundation to support value creation, we are moving forward with our initiatives.



Values to create

What we aim for

Total energy service corporate group that is one step ahead

Principles of action

Fulfilling our unwavering mission

With consideration for the global environment, deliver high-quality energy services at reasonable prices in a safe and stable manner

Achieve simultaneously

Creating new value

Offering new attractive products and services ahead of other companies, and expanding the business area at home and abroad by making use of accumulated managerial resources and know-how

Customers

We are committed to providing our customers with safe, convenient and affordable energy services, as well as other services of value that meet their needs.

Shareholders and Investors

We are striving to maintain and increase profits for our shareholders and investors through efficient management and effective investment.

Local Communities

We are determined to conserve the global environment and contribute to sustainable local development in partnership with local communities.

Business Partners

We promise to deal fairly with our suppliers as equal business partners toward mutual growth and development.

Employees

We respect individuals and are endeavoring to create a cheerful and motivating workplace.

Chubu Electric Power Group

Corporate Philosophy

The Chubu Electric Power Group delivers the energy that is indispensable for people's lives and so contributes to the development of society.

Governance/Compliance

See page 65

Thorough ecological management

See page 75

See next page for the **outcome of value creation**