

ACTIVITIES

Ohm Theater times can be found at the museum and on our website.

※These times are subject to change.

Ohm Theater

Make a video game character with a selfie!

3F



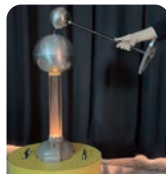
- Capacity: 72
- For advanced and sameday ticket reservations, access the QR code.
- Tickets are also available on the 3rd floor next to the Ohm Theater counter.
- ※Children under 6 should be accompanied by an adult.



Experiments

Visitor participation welcome!

Science Plaza (2F)



- Capacity: 84
- No reservations required
- Weekday experiments on a reservation basis only

The Electricity Museum's official sites.

※in Japanese only



homepage



Instagram



YouTube



LINE

Information

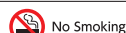
Free Admission

Visitor Information

- ◆Museum Hours: 9:30 a.m. ~ 5:00 p.m.
- ◆Closed Mondays: When a Monday falls on a holiday, the museum will be open and the museum will then be closed the next day, Tuesday.
- ◆Closed the third Friday of every month except in August.
- ◆Closed from December 29th to January 3rd.
- Wheelchairs and wheelchair-accessible restrooms are available.
- Baby strollers and a nursing room can be used by visitors with infants. Please ask at the reception desk for more information.

Visits and Tours

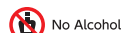
- ◆Pictures may be taken anywhere in the museum except inside Ohm Theater.
- ◆Tours conducted by museum staff are available for groups in Japanese and English. Interested visitors should contact the museum at least one week prior to visiting.
- ◆Lunch may be eaten in the rest space on the 2nd floor.
- ◆Paid parking is available for vehicles no more than H 1.55 m x L 5.05 m x W 1.85 m, 80-car capacity.
- ◆Free bus parking for groups with reservations: Buses must be less than 3.5 m high, 3-bus capacity. Please contact the museum at least one week prior to visiting.



No Smoking



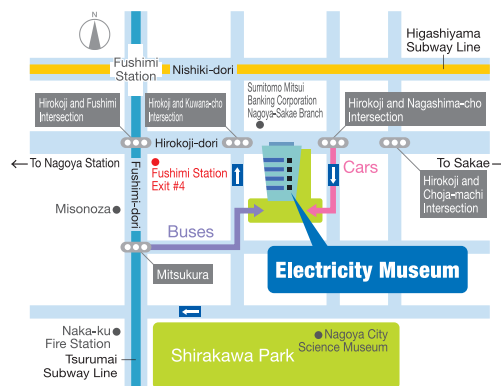
No Eating or Drinking



No Alcohol



Seeing-Eye Dogs Permitted



2-minute walk east of Fushimi Station, Exit #4

Chubu Electric Power Co., Inc. Electricity Museum

Sakae 2-2-5, Naka-ku, Nagoya City 〒460-0008

TEL (052) 201-1026 FAX (052) 220-1280

<http://www.chuden.co.jp/e-museum/>

INFORMATION GUIDE

A Place for Enjoying Science

Electricity Museum

Make Great Discoveries!



4F

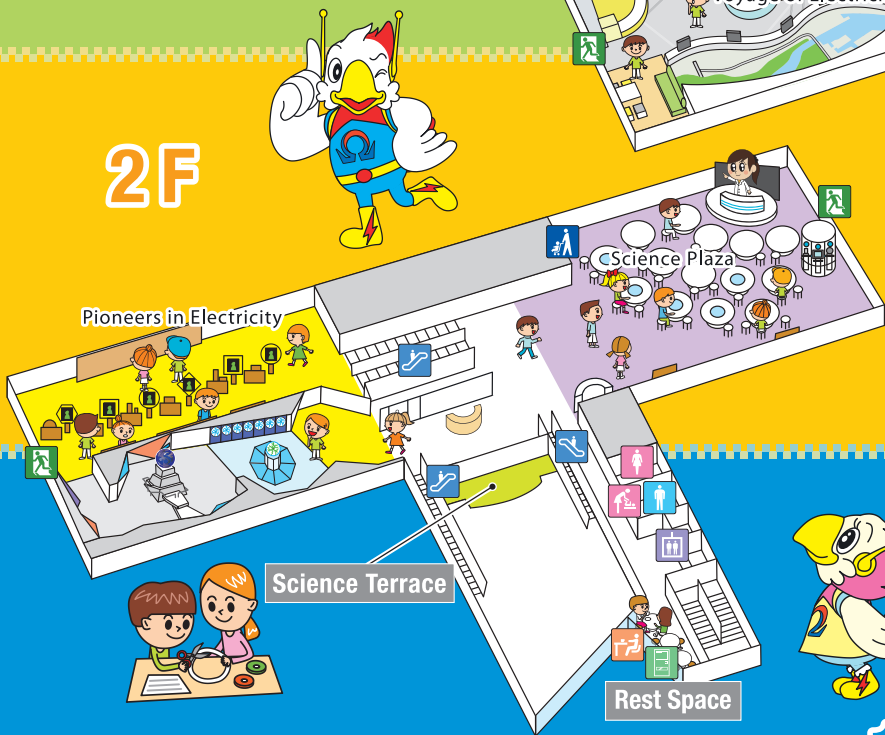


- Restroom
- Elevator
- Escalator
- Nursing Room
- Lockers (free)
- Emergency Exit
- Stroller Parking
- Vending Machine
- Rest Space

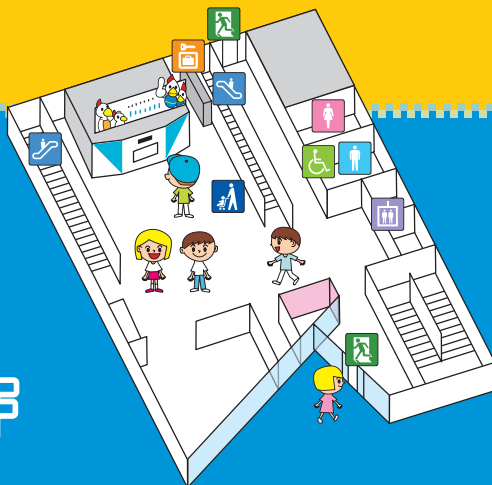
3F



2F



1F



History Room

4F



Documents related to the electric power industry are on display in the History Room.

Study Square

4F



Learn about electricity using DVDs and other materials available here.

The Land of Scientific Mysteries

4F



Experience various science exhibits that will have you doubting your eyes and senses.

Earth and Energy

3F



This hall is divided into 3 areas, the environment, energy resources and electricity generation. Here, you will learn about energy and environment related problems.

Voyage of Electricity

3F



In this area, learn how electricity is produced at power plants and then transported for use in homes and businesses.

Science Plaza

2F



Participate in fun static electricity and science experiments while learning about how amazing science is.

Pioneers in Electricity

2F



Meet scientists like Thomas Edison and Alessandro Volta who contributed to the discovery and development of electricity.

Orientation Room (B1)

Special groups visiting the museum may use this space for meals.

