

Information

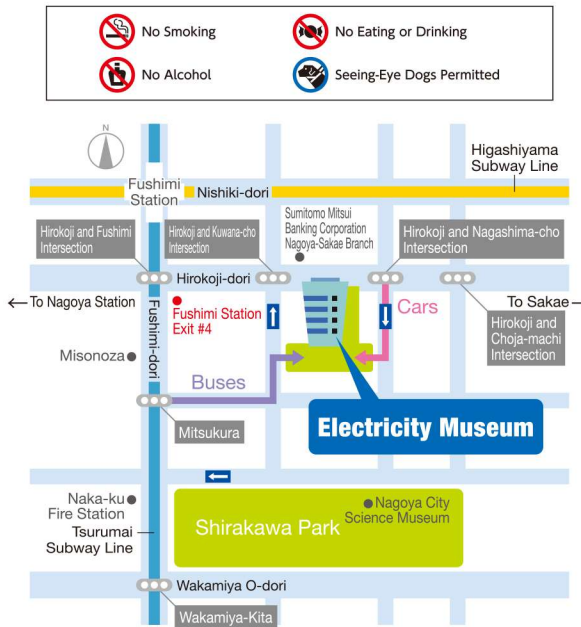
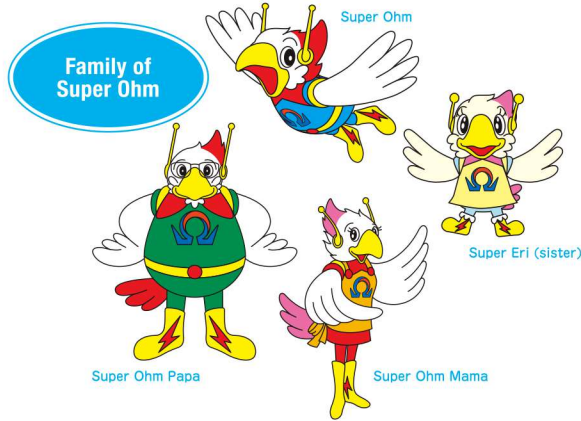
Free Admission

Visitor Information

- ◆ Museum Hours: 9:30 a.m. ~ 5:00 p.m.
- ◆ Closed Mondays: When a Monday falls on a holiday, the museum will be open and the museum will then be closed the next day, Tuesday.
Closed every third Friday except August.
Closed from December 29th to January 3rd.
- ◎ Wheelchairs and wheelchair-accessible restrooms are available.
- ◎ Baby strollers and a nursing room can be used by visitors with infants. Please ask at the reception desk for more information.

Visits and Tours

- ◆ Pictures may be taken anywhere in the museum except inside the theater.
- ◆ Tours conducted by museum staff are available for groups in Japanese and English. Interested visitors should contact the museum at least one week prior to visiting.
- ◆ Lunch may be eaten in the rest space on the 2nd floor.
- ◆ Paid parking is available for vehicles less than H 1.55 m x L 5.05 m x W 1.85 m, 80-car capacity.
- ◆ Free bus parking for groups with reservations: Buses must be less than 3.5 m high, 3-bus capacity. Please contact the museum at least one week prior to visiting.



2-minute walk east of Fushimi Station, Exit #4

Chubu Electric Power Co., Inc. Electricity Museum

Sakae 2-2-5, Naka-ku, Nagoya City 〒460-0008
TEL (052) 201-1026 FAX (052) 220-1280
<http://www.chuden.co.jp/e-museum/>

Admission: Free

Printed on Recycled Paper

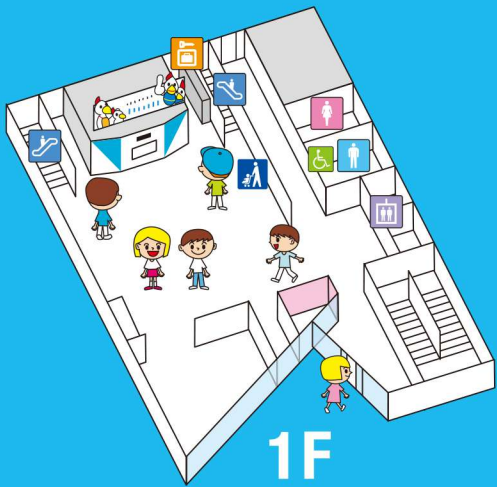
CHUBU Electric Power

INFORMATION GUIDE
A Place for Enjoying Science

Electricity Museum

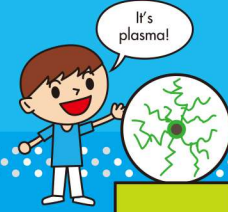
Make Great Discoveries!



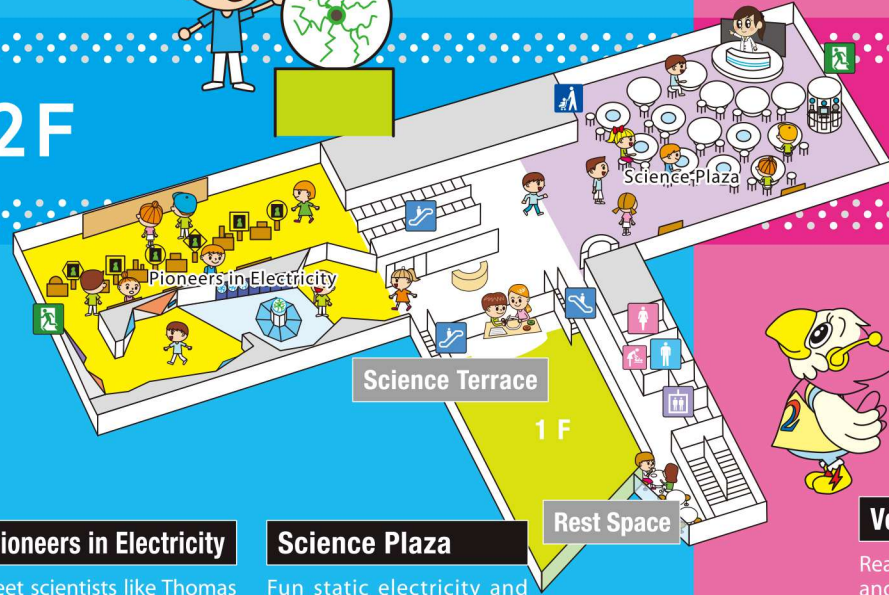


- Restroom
- Wheelchair-accessible Restroom
- Elevator
- Escalator
- Nursing Room
- Lockers (free)
- Exit
- Stroller Parking

1F



2F



Pioneers in Electricity

Meet scientists like Thomas Edison and Alessandro Volta who contributed to the discovery and development of electricity.

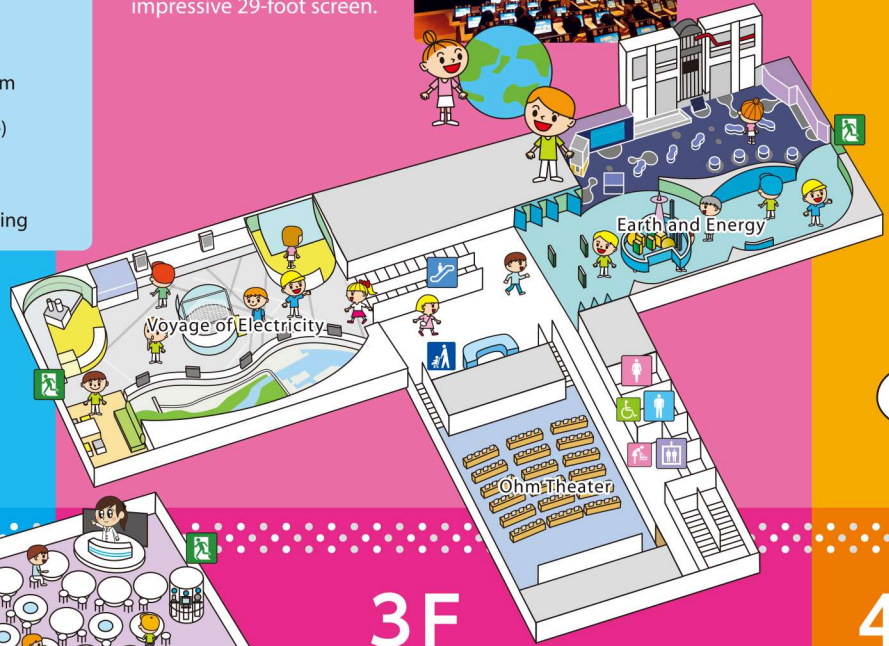
Science Plaza

Fun static electricity and science experiments are performed on weekends and holidays in this area.



Ohm Theater

Participate in quizzes and competitions as a video game character on our impressive 29-foot screen.



3F

Voyage of Electricity

Real electrical equipment and models are used to show how electricity is produced at power plants and then transported for use in homes and businesses.



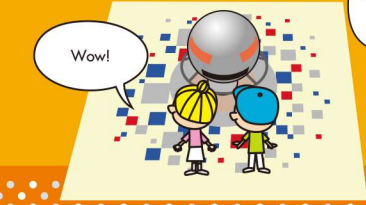
Earth and Energy

This hall is divided into 3 areas, the environment, energy resources, and generating electricity. Here you will learn about problems with energy and the environment.



The Land of Scientific Mysteries

Experience various optical illusions that will have you doubting your eyes. This world of mysteries is introduced to you using science.



Study Square

Learn about science, energy, and the environment.



4F



History Room

Valuable documents related to the electric power industry are on display in the "History Room."



So many books!